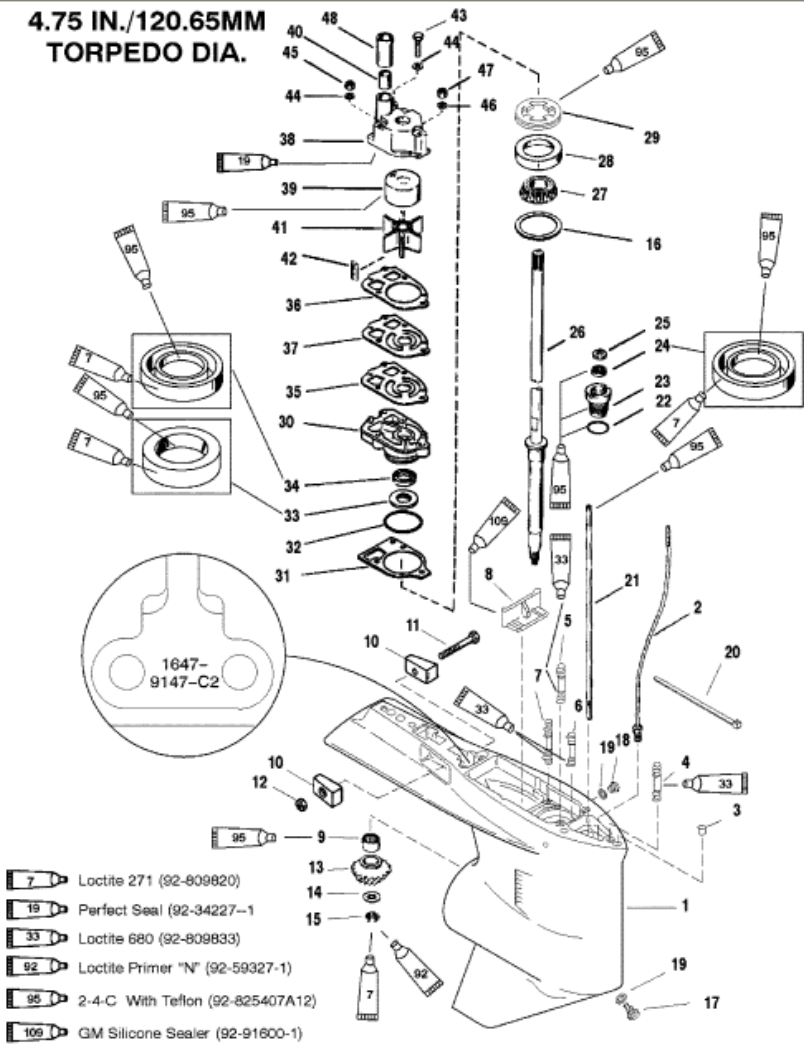


**4.75 IN./120.65MM
 TORPEDO DIA.**



GEAR HOUSING (DRIVE SHAFT)(STANDARD ROTATION)

Parts List						
Ref	Class	Part	Description	Qty	Comment	Footnote
1	1647	9148193	GEAR HOUSING	1	(BLACK)(BASIC)	
2	22	85822A10	CONNECTOR ASSEMBLY	1		
3	17	43044	DOWEL PIN	2		
4	16	78638	2	1	(LONG)	
4	16	18978	3	1	(X-LONG)	
5	16	57920	3	2		
6	16	56297	2	1		
7	16	30667	STUD (3-1/8 IN.)	2		
8		67891	FILLER BLOCK	1		
9	31	42647A	1	1		
10		826134	ROLLER BEARING	1		
11	10	40003	33	2		
11	10	40003	33	1		
12	11	826833	6	1		
12	11	826833	6	1		
13		NSS	PINION GEAR (PART OF 43-8281)	1	(1.87:1GEAR RATIO-15TEETH)	5
14	12	92721	WASHER	1	INCLUDED WITH FORWARD GE	
15	11	35921	NUT	1	INCLUDED WITH FORWARD GE	
16	15	42637A	1	AR	INCLUDED WITH FORWARD GE	6
17	22	67892A	1	1		
18	10	79953A	2	1		
19	12	19183	WASHER	2		10,8
20		56762	STA-STRAP	1		
21		78902	2	1		
22	25	25439	O-RING	1		4,8
23	23	77631A	2	1		8
24	26	816464	1	1		8
25	12	77674	WASHER-RUBBER	1		
26	45	44000	1	1	(LONG)	
26	45	44209	1	1	(X-LONG)	
27	31	36387A	1	1		
28		NSS	CUP	1		5
29		824519	RETAINER	1		
30	46	42579A	3	1		
31	27	42631	1	1		4,10,8
32	25	90011	O-RING	1		4,10,8
33	26	89238	OIL SEAL	1		8
34	26	16977	OIL SEAL	1		8
35	27	85608	1	1		4,10,8
36	27	85609	1	1		4,10,8
37		32435	FACE PLATE	1		10
38	46	96148A	1	1		10
39		48252T	INSERT	1		10